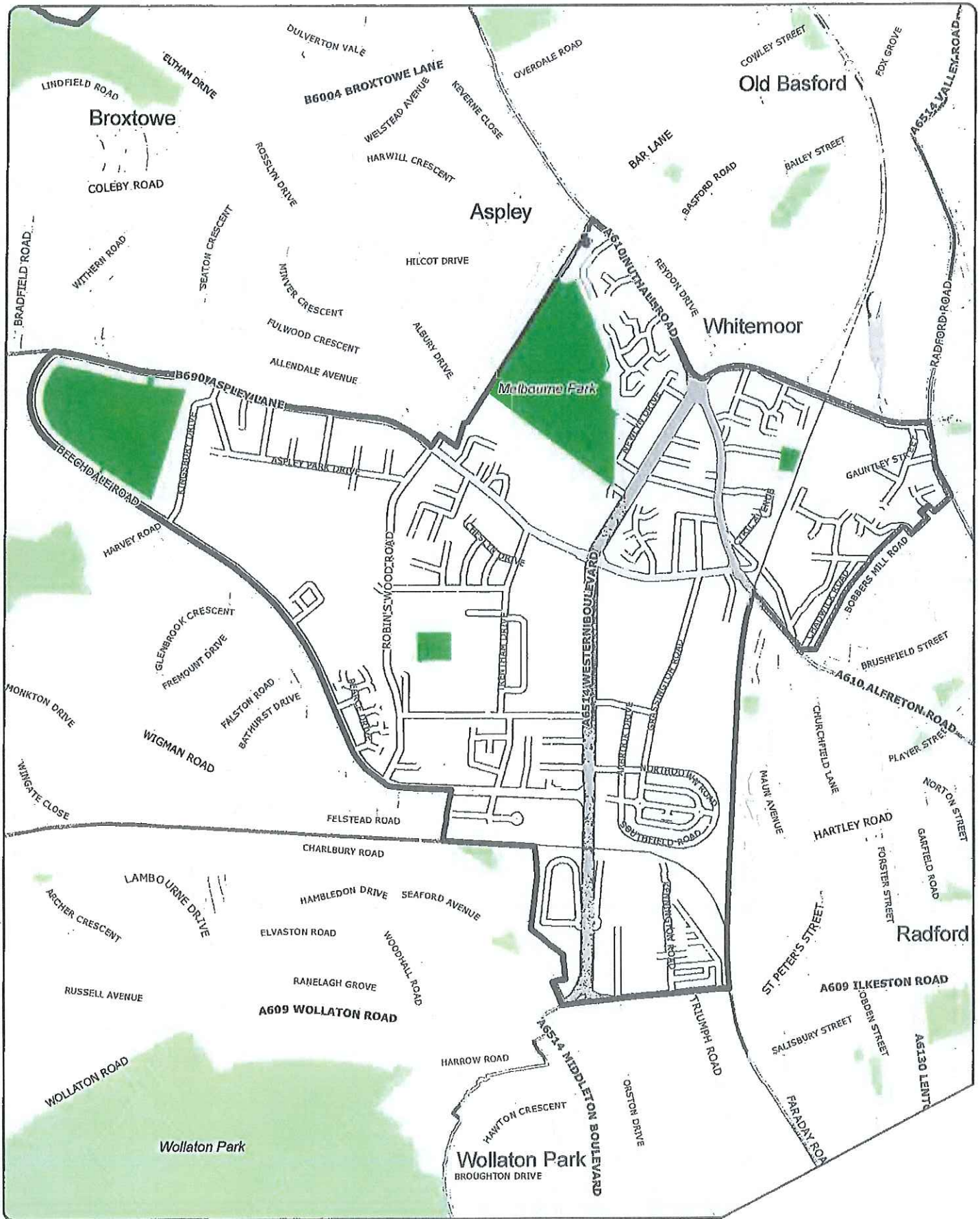


NCC's Public Spaces Protection Orders in Respect of Dogs

Leen Valley Ward

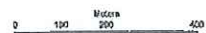
Plan 15



Key

-  City Boundary
-  Dogs on leads by direction
-  Wards

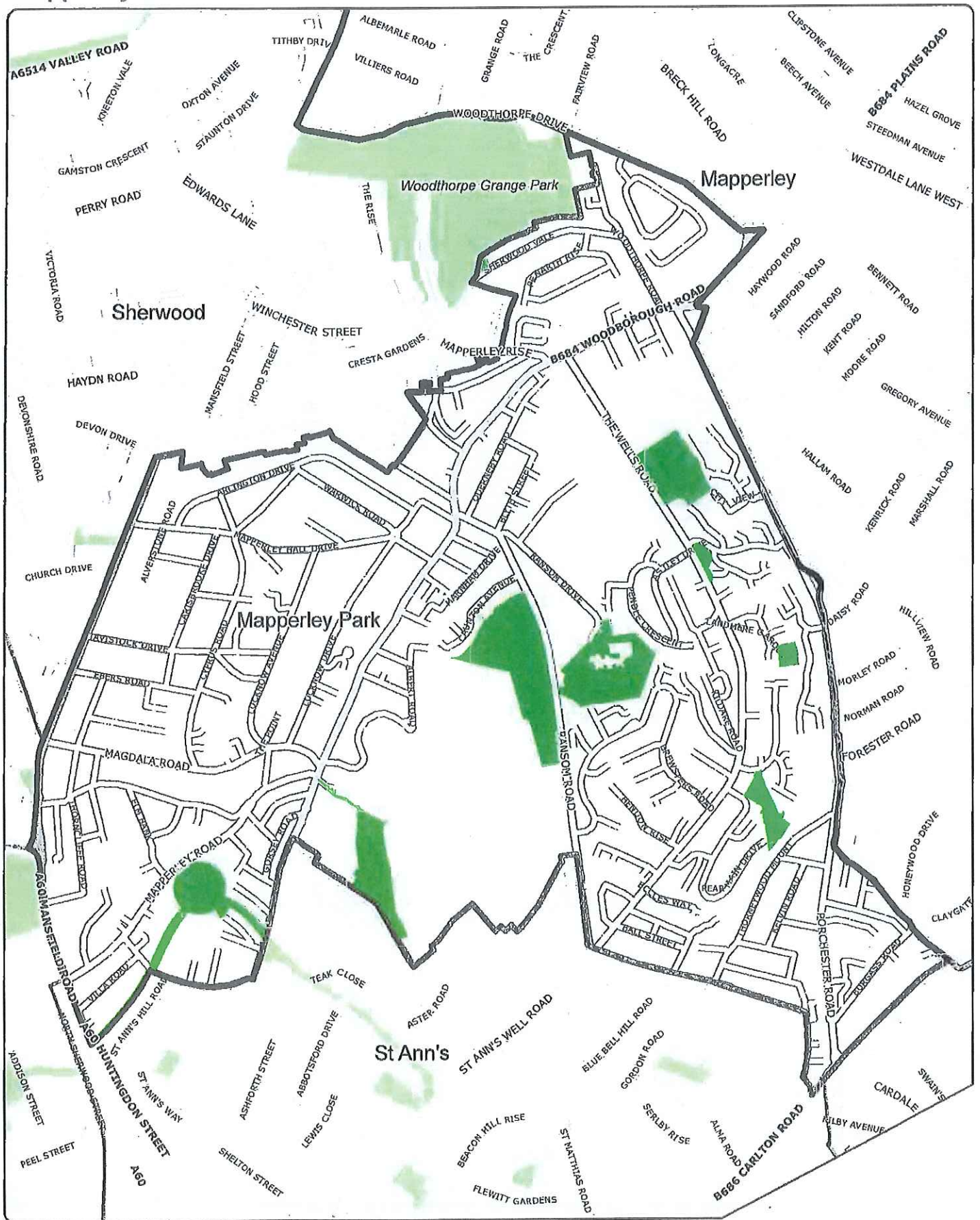
© Crown copyright and database right 2016. Ordnance Survey Licence number 100019317.
GIS Team 18/08/2016



NCC's Public Spaces Protection Orders in Respect of Dogs

Mapperley Ward

plan 16



Key

-  City Boundary
-  Wards
-  Dogs on leads by direction

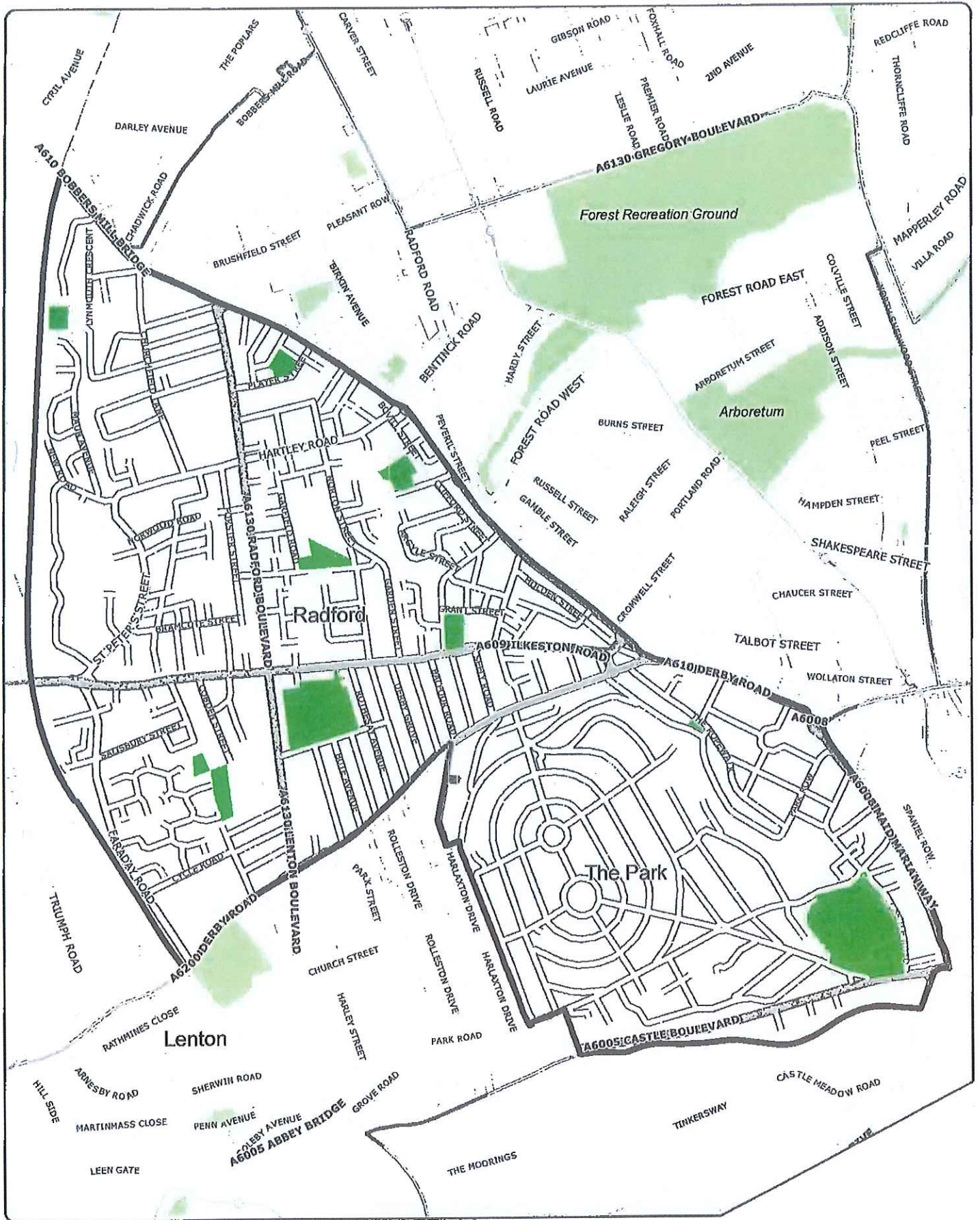
© Crown copyright and database right 2016. Ordnance Survey Licence number 100019317. GIS Team 18/08/2016



NCC's Public Spaces Protection Orders in Respect of Dogs

Radford and Park Ward

Plan 17



Key

- City Boundary
- Wards
- Dogs on leads by direction

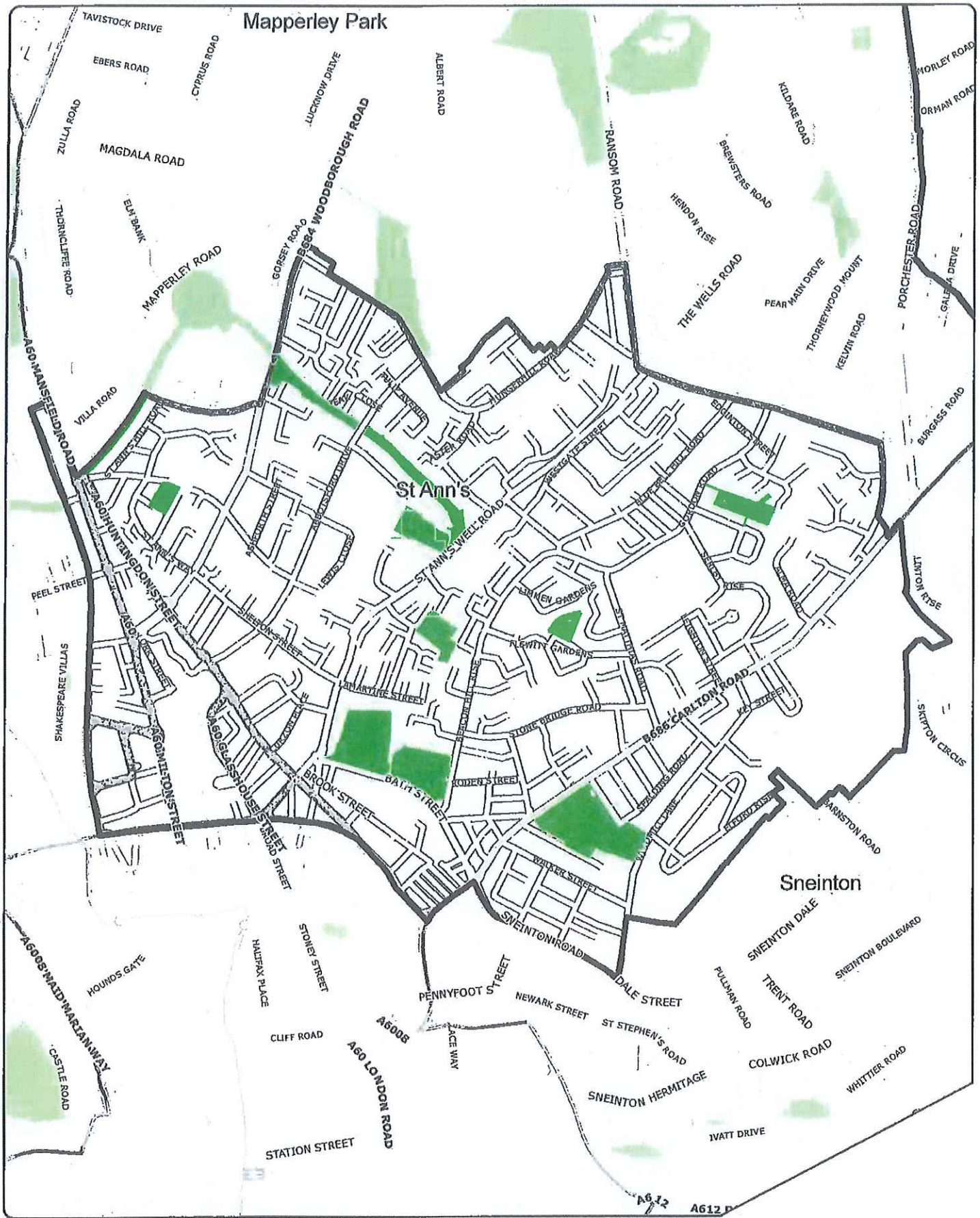
© Crown copyright and database right 2018. Ordnance Survey Licence number 100019317. GIS Team 18/08/2016



NCC's Public Spaces Protection Orders in Respect of Dogs

St Ann's Ward

plan 19



Key

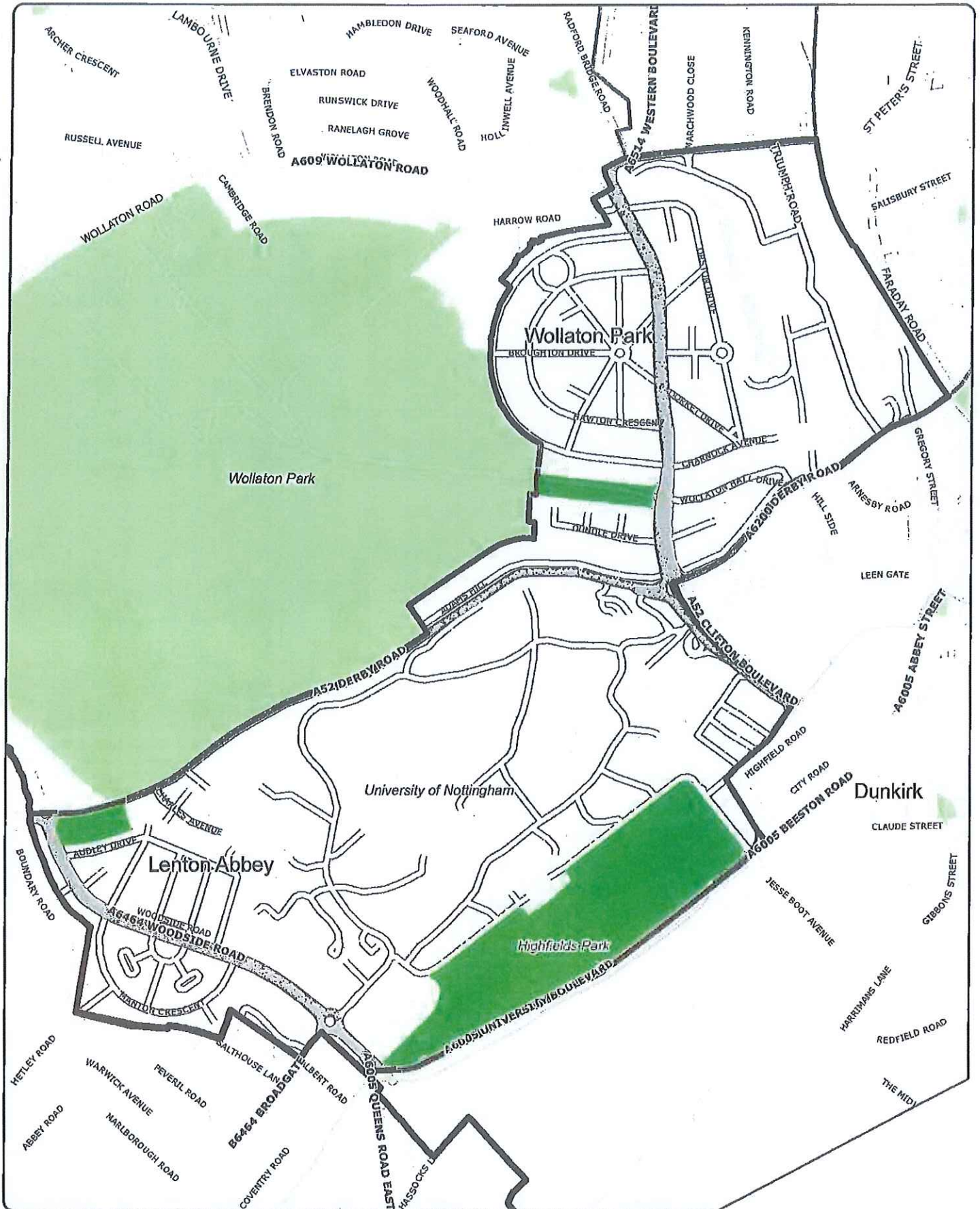
-  City Boundary
-  Dogs on leads by direction
-  Wards

© Crown copyright and database right 2016. Ordnance Survey Licence number 100019317. GIS Team 16/08/2016



NCC's Public Spaces Protection Orders in Respect of Dogs Wollaton East and Lenton Abbey Ward

Plan 20



© Crown copyright and database right 2016. Ordnance Survey Licence number 100019317. GIS Team 18/08/2018

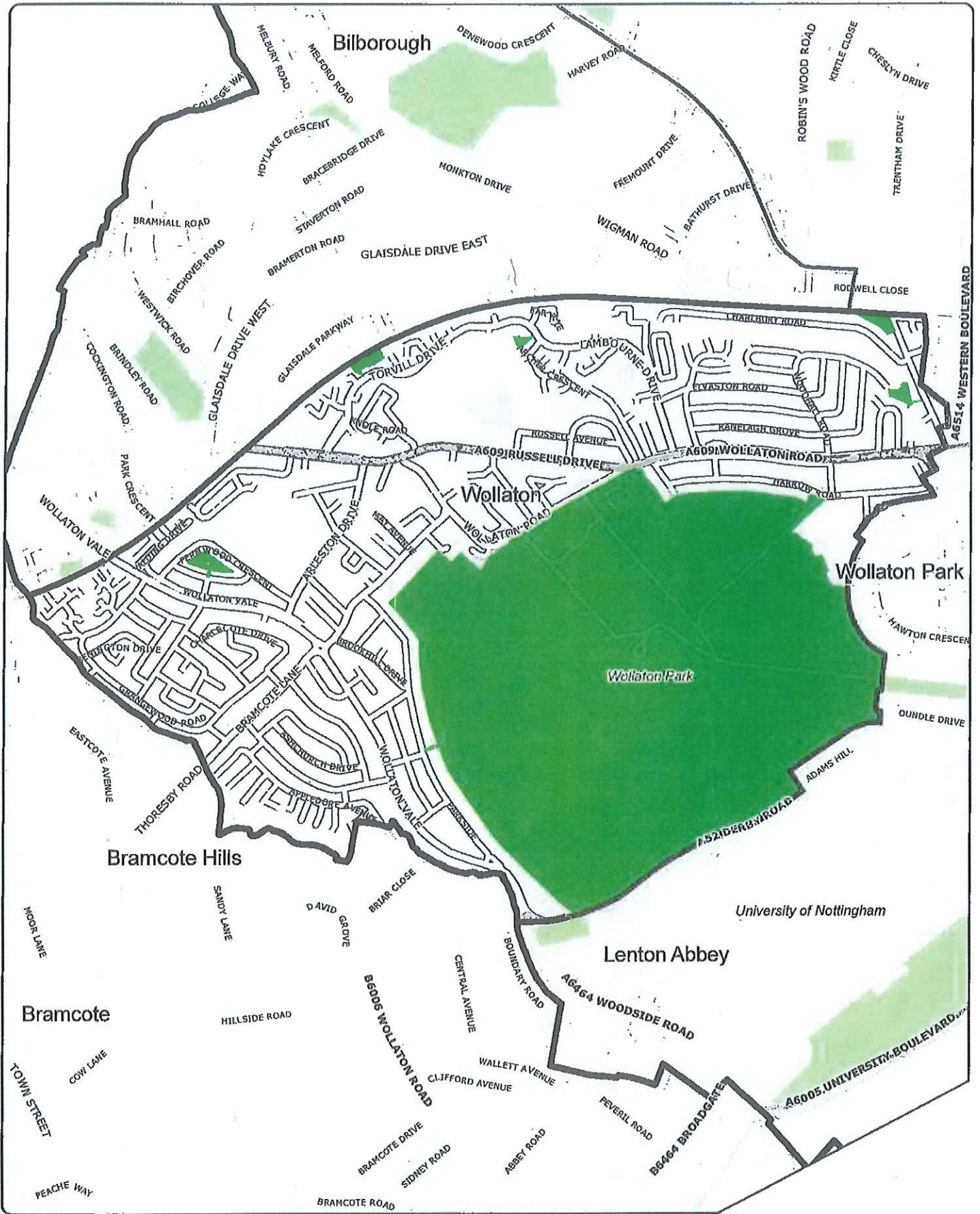


Key

-  City Boundary
-  Dogs on leads by direction
-  Wards

NCC's Public Spaces Protection Orders in Respect of Dogs Wollaton West Ward

plan 21



Key

-  City Boundary
-  Dogs on leads by direction
-  Wards

© Crown copyright and database right 2016. Ordnance Survey Licence number 100019317. GIS Team 18/08/2016



THE NOTTINGHAM CITY COUNCIL DOGS ON LEAD BY DIRECTION
PUBLIC SPACES PROTECTION ORDER 2016

(ANTI-SOCIAL BEHAVIOUR, CRIME AND POLICING ACT 2014, CHAPTER
2, SECTION 59 – 75)

NOTTINGHAM CITY COUNCIL
DOGS ON LEAD BY DIRECTION
PUBLIC SPACES PROTECTION ORDER 2016
(ANTI-SOCIAL BEHAVIOUR, CRIME AND POLICING ACT 2014, CHAPTER 2
SECTION 59 – 75)

Pursuant to section 60 (2) of the Anti-social Behaviour, Crime and Policing Act 2014 the period that the Nottingham City Council Dogs on Lead by Direction Public Spaces Protection Order 2016 has effect has been extended. This extension was approved by the Nottingham City Council's Executive Board on [insert date]. This Order will now expire on 24th September 2022.

Dated this day of 201

Signed:

Authorised Signatory